



Configuring

Web-based Manager

Use the following procedure to connect to the web-based manager for the first time. Configuration changes made with the web-based manager are effective immediately without resetting the FortiWeb unit or interrupting service.

To connect to the web-based manager

1. Connect the Port 1 interface of the FortiWeb unit to Ethernet port of the management computer. Use a cross-over Ethernet cable to connect the devices directly. Use straight-through Ethernet cables to connect the devices through a hub or switch.
2. Configure the management computer to be on the same subnet as the FortiWeb Port 1 interface. To do this, change the IP address of the management computer to 192.168.1.2 and the netmask to 255.255.255.0.
3. To access the FortiWeb web-based manager, in your browser, go to <http://192.168.1.99>.
4. Type admin in the Name field and click Login.

After connecting to the Web-based manager, you can configure the FortiWeb unit IP address, DNS server IP address, and default gateway to connect the FortiWeb unit to the network.

To configure interfaces

1. Go to System > Network > Interface.
2. Select the Edit icon for each interface to configure.
3. Set the IP address and netmask for the interface.
4. Select OK.

To configure the Primary and Secondary DNS server IP addresses

1. Go to System > Network > DNS, enter the Primary and Secondary DNS IP addresses and click Apply.

To configure a Default Gateway

1. Go to Router > Static and select Create New.
2. Set Gateway to the Default Gateway IP address and select OK.

To add the "admin" user account password

1. Go to System > Admin > Administrators.
2. For the admin user, select the Change Password icon.
3. Enter a new password in the Password field.
4. Reenter the password to Confirm Password field.
5. Select OK.

Command Line Interface

The FortiWeb unit has serial port. Use the null modem cable to connect it to your management computer.

To connect to the FortiWeb unit

1. Use a null modem cable to connect the FortiWeb serial port to the management computer serial port.

2. Start a terminal emulation program (such as HyperTerminal) on the management computer. Use these settings: Baud Rate 9600, Data bits 8, Parity None, Stop bits 1, Flow Control None.
3. At the login: prompt, type admin and press Enter twice. (The login prompt is preceded by the FortiWeb unit's default host name.)

After connecting to the CLI, you can configure the FortiWeb unit IP address, DNS server IP address, and default gateway to connect the FortiWeb unit to the network.

To configure the FortiWeb unit using the CLI

1. Set the IP address and netmask of the Port1 interface.


```
config system interface
  edit port1
    set ip <interface_ipv4> <interface_ipv4>
  end
```
 2. Configure the primary and secondary DNS server IP addresses.


```
config system dns
  set primary <dns-server_ipv4>
  set secondary <dns-server_ipv4>
end
```
 3. Configure the default gateway.


```
config router static
  edit 1
    set device <interface_name>
    set dst <destination_ipv4mask>
    set gateway <gateway_ipv4>
  end
```
- To add an administration password**
1. Enter the following commands:


```
config system admin
  edit admin
    set password <password_str>
  end
```

Shutting down the FortiWeb unit

When powering off the FortiWeb unit, always shut down the unit using the following procedures before disconnecting the power supply. Not following this procedure can increase the risk of damaging the FortiWeb hard disk. You can only shut down the FortiWeb unit using the CLI. Enter the following command at the prompt:

```
execute shutdown
```

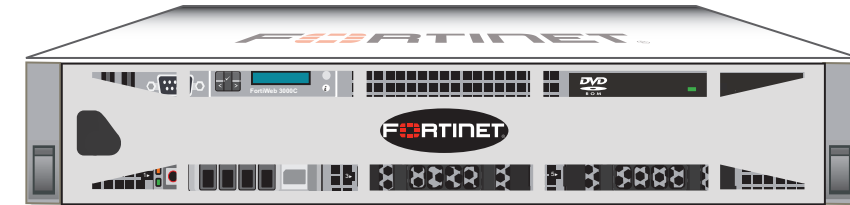
You can also shut down in the Web config. Got to System > Status and click Shut Down in the System Information Dashboard. Click OK.

To power down completely, remove the front panel and press the power button.

Visit these links for more information and documentation for your Fortinet product:

Technical Documentation - <http://docs.fortinet.com> Fortinet Knowledge Base - <http://kb.fortinet.com>
 Technical Support - <http://support.fortinet.com> Training Services - <http://campus.training.fortinet.com>

FortiWeb-3000C

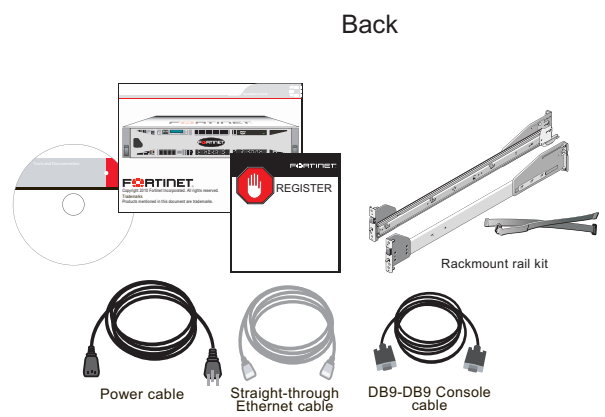
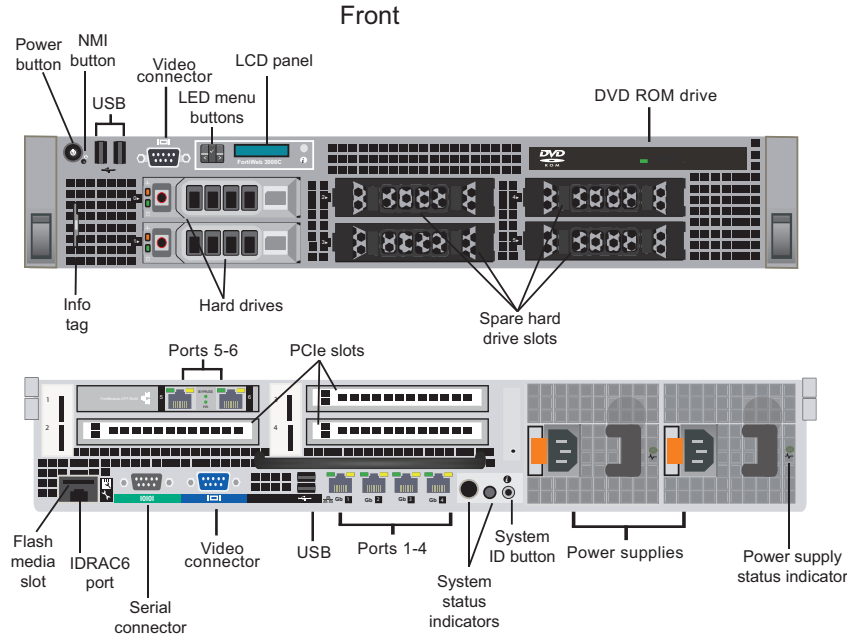


AC Power Required	100 – 240 VAC, 50 – 60 Hz, 9.0 Amp (Max)
Power Consumption (average)	200 W
Chassis	Rack Mount (2-RU)
Redundant Power Supplies (Hot-swappable)	Yes
Network Interfaces	6 10/100/1000 Ethernet Base-T 4 USB connections 1 RS-232 Console 1 Serial port 1 DVD ROM drive
Disk Storage capacity	6 3.5" x 1 TB slots — 2 x 1TB hard drives provided

FORTINET®

© Copyright 2010 Fortinet Incorporated. All rights reserved.
 Products mentioned in this document are trademarks or registered trademarks of their respective holders.
 Regulatory Compliance
 FCC Class A Part 15 UL/CB/CUL, C Tick, VCCI
 13 January 2010

Package Contents



Factory Defaults

Administrator user name	admin
Administrator password	(none)
Inline Protection Mode	
Port 1 interface	192.168.1.99
Port 2-6 interface	0.0.0.0

To reset the FortiWeb unit to the factory defaults, in the CLI type the command:
`execute factoryreset`

LED Description

LED	State	Description
LCD panel	Blue	Normal system operation.
	Amber	System requires attention. An error code and message is shown.
Hard drives	Green	Drive online.
	Off	Drive ready for insertion or removal
Ports 1 to 4	Activity (right) Off	Port has power and network connection.
	Activity (right) indicator Green flashing	Network data is being sent or received.
	Link/speed (left) indicator is Green	Connected at 1000 Mbps.
	Link/speed (left) indicator is Amber	The interface is connected at 100 or 10 Mbps.
Ports 5 to 6	Link/Activity (left) Green	Port has power and network connection.
	Link/Activity (left) Green flashing	Network data is being sent or received.
	Speed (right) indicator is Green	Connected at 1000 Mbps.
	Speed (right) indicator is Amber	The interface is connected at 100 Mbps.
	Speed (right) indicator is Off	Connected at 10 Mbps.
Power supply indicator	Off	AC power is not connected.
	Green	Power supply operational.
	Amber	Power supply problem.
	Blinks green and amber	Power supply is mismatched with other power supply.
Bypass	Green	Bypass network activity at this interface.
	Off	Normal status or not receiving power from the FortiWeb unit.
HA	Green	If there is a power loss, the ports will be in bypass mode.
	Off	If there is a power loss, the ports will be in cut-off mode.

Interface Description

Interface	Type	Speed	Protocol	Description
Ports 1 to 6	RJ-45	10/100/1000 Base-T	Ethernet	Integrated 10/100/1000 NIC connectors.
USB	USB		USB	Four optional connections to a USB key for firmware backup and installation.
Hard drives	1 TB			Two hard drives are provided and can be upgraded to six if necessary.
Serial				Connects a serial device to the system.
iDrac6 Enterprise port				Port for the iDRAC6 enterprise card.
Flash media slot	SD			Connects an SD memory card for the optional iDRAC6 enterprise card.
PCIe slots	PCIe	500 MB/s	Serial	Three PCIe (Generation 2) expansion slots. Slot 2 = x4-link, Slot 3= x8-link and Slot 4 = x8-link
Video				Two ports that connects to a monitor system.

Connecting

Connect the following to the unit. Ensure the unit is placed on a stable surface or install in a standard 19 inch rack. See the *FortiWeb-3000C Rack and Hardware Install Guide* for details.

- Assemble the rails and install the system in the rack following the safety instructions and the rack installation instructions provided with your system.
- Connect the keyboard, mouse, and monitor (optional).
- Connect the system's power cable(s) to the system and, if a monitor is used, connect the monitor's power cable to the monitor.
- Bend the system power cable into a loop and secure the cable to the bracket using the provided strap.
- Plug the other end of the power cables into a grounded electrical outlet or a separate power source such as an uninterruptible power supply (UPS) or a power distribution unit (PDU).
- Insert an Ethernet cable into the one of the 6 ports on the FortiWeb unit. Insert the other end to the router connected to the Internet, or to the modem
- Press the power button on the system and the monitor.