

For more information

- Documentation CD: all major FortiMail documents
- Fortinet Technical Documentation: <http://docs.fortinet.com>
- Fortinet Knowledge Base: <http://kb.fortinet.com>
- Fortinet Technical Support: <http://support.fortinet.com>
- Fortinet Training Service: <http://campus.training.fortinet.com>



© Copyright 2010 Fortinet Incorporated. All rights reserved.

Trademarks

Products mentioned in this document are trademarks or registered trademarks of their respective holders.

Regulatory Compliance

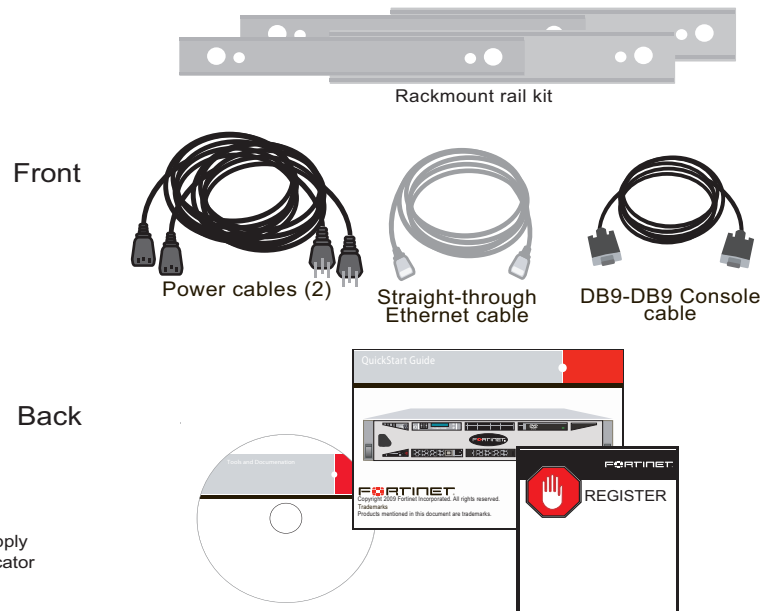
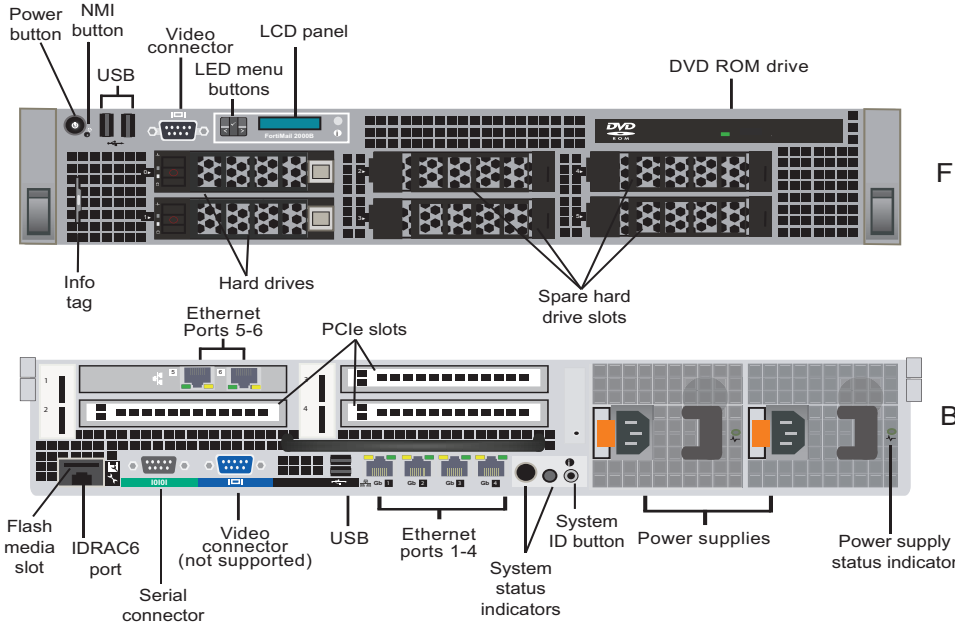
FCC Class A Part 15, CE, and UL

Version 4.0

9 February 2010

<http://www.fortinet.com>

Package Contents



Interface	Type	Speed	Protocol	Description
Port 1 to 6	RJ-45	10/100/1000 Base-T	Ethernet	Connection to the network.
CONSOLE	DB-9	9600 8/N/1	RS-232 serial	Connection to the management computer. Provides access to the command line interface (CLI).
USB	USB		USB	For mail data backup and restore in server mode.
Hard drive	1 TB			Two hard drives and four spare slots are provided.
iDRAC6 port				Port for iDRAC6 enterprise card.
Flash media slot	SD			Connection to an SD memory card for the optional iDRAC6 card.
PCIe slots	PCIe	500 MB/s	Serial	Three PCIe Generation 2 expansion slots. Slot 2=x4-link, slot 3=x8-link and slot 4=x8-link.
Video				Connection to monitors. The video connector on the back is not supported.

LED	State	Description
Power supply indicator	Off	AC power is not connected.
	Green	Power supply is operational.
	Amber	Power supply problem.
	Blinks green and amber	Power supply is mismatched with other power supply.
LCD panel	Blue	Normal system operation.
	Amber	System requires attention. An error code and message is shown.
Hard drives	Green	Drive online.
	Slow green blinking	Drive rebuilding.
	Blinks amber 4 times per second	Drive failed.
	Blinks green, amber, and off	Drive predicted failure.
	Blinks green 3 times per second	Identify drive/prepare for removal.
	Off	Drive is ready for insertion or removal.
Port 1-4	Activity (right) indicator green flashing	Network data is being sent or received.
	Link (left) indicator is green	Connected at 1000 Mbps.
	Link (left) indicator is amber	Connected at 10/100 Mbps.
	Both LEDs off	No connection to the network.
Port 5-6 left LED	Off, amber, or green	Off -- connected at 10 Mbps; Amber -- connected at 100 Mbps; Green -- connected at 1000 Mbps
Port 5-6 right LED	Green or flashing	Green -- port has power and network connection; Flashing -- network activity.

Installation Overview

Installation and configuration of the FortiMail unit involves the following steps:

1. Mounting the unit (optional). See detailed mounting instructions in the *FortiMail Install Guide* on the documentation CD.
2. Connecting the unit to the network. For details, see the *FortiMail Install Guide*.
3. Powering up the unit. See instructions below.
4. Connecting to the web-based manager. See instructions below.
5. Selecting an operation mode: Gateway, Transparent, or Server. For details, see the *FortiMail Install Guide*.
6. Running the QuickStart wizard to configure the basic settings. For details, see the *FortiMail Install Guide*.
7. For all other installation instructions, see the *FortiMail Install Guide* on the documentation CD.
8. For all the configuration instructions, see the *FortiMail Administration Guide* and the FortiMail online help.
9. If you want to use the CLI commands to configure the unit, see the *FortiMail CLI Reference* on the documentation CD.

Collecting Information

Interface settings

Port 1:	IP: _____ Netmask: _____
Port 2	IP: _____ Netmask: _____
Port 3:	IP: _____ Netmask: _____
Port 4	IP: _____ Netmask: _____
Port 5:	IP: _____ Netmask: _____
Port 6	IP: _____ Netmask: _____
Transparent mode	Management IP: _____

General settings

Administrator password:	
Network Settings:	Default Gateway: _____
	Primary DNS Server: _____
	Secondary DNS Server: _____

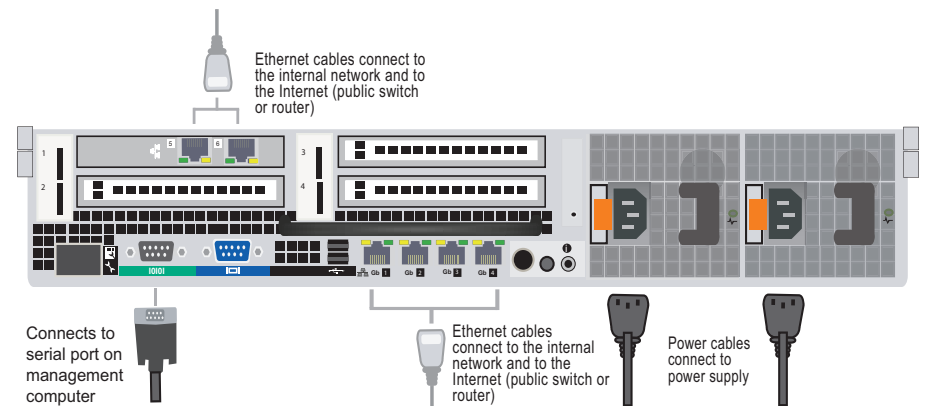
Factory default settings

Default mode	Gateway mode	
Administrator account on Port 1	User name/Password:	admin/(No password)
	Web-based manager URL:	https://192.168.1.99/admin
Management Access	HTTPS, Ping, SSH	

Powering On

To power on the FortiMail unit

1. Place the FortiMail unit on a stable surface. The unit requires 1.5 inches (3.75 cm) clearance on each side to allow for cooling.
2. Alternatively install the unit in a 19-inch rack. The unit requires 2U of vertical space. For detailed instructions, see the *FortiMail Install Guide* on the documentation CD.
3. Ensure the power is not connected.
4. Connect the network cable to port 1.
5. Connect the power cable.
6. Turn on the power switch.



Configuration Tool Overview

You can use one of the following tools to configure the FortiMail unit. If you are connecting and using the unit for the first time, it is recommended you use the web-based manager only, because it comes with a quick start configuration wizard which can guide you through the initial setup.

- **Command Line Interface (CLI)**

The FortiMail unit has a console port and you can use a console cable to connect it directly to your management computer. For information about CLI commands, see the *FortiMail CLI Reference* on the documentation CD.

- **Web-based manager**

The web-based manager is an easy-to-use management tool that you can access from a web browser.

Using the web-based manager

The web-based manager has two display modes: Basic and Advanced. The default mode when you first log on is Advanced. You can switch between the two modes by clicking **Basic Mode >>** or **Advanced Mode >>**.

In either mode, you can run the quick start configuration wizard to configure the basic network and antispam settings. For detailed information about the quick start wizard, see the *FortiMail Install Guide*.

Configuration changes made with the web-based manager are effective immediately.

The FortiMail unit has the operation mode: gateway, transparent, and server. For details about operation modes and which mode you should use, see the *FortiMail Install Guide*.

The default operation mode is gateway mode. You can change to transparent mode or server mode after connecting to the unit. Changing operation mode causes system reboot.

To connect to the web-based manager, you need:

- An Ethernet connection between the FortiMail unit and your management computer.
- A web browser such as Firefox or Internet Explorer with Adobe Flash Player 10 or greater plug-in.

To connect to the web-based manager for the first time

1. On your management computer, configure the Ethernet port with the static IP address 192.168.1.2 and a netmask of 255.255.255.0.
2. Using the Ethernet cable, connect your computer's Ethernet port to the FortiMail unit's port 1. Use a cross-over Ethernet cable to connect the devices directly. Use straight-through Ethernet cables to connect the devices through a hub or switch.
3. Start your web browser and go to https://192.168.1.99/admin (include the "s" in https:// and "/admin" after the IP address).
4. Type **admin** in the Name field and select Login.
5. Go to **Monitor > System Status > Status** (the dashboard) to set the operation mode. The system will reboot.
6. Log on to the system again.
7. Click **Quick Start Wizard** to run the quick start configuration wizard and follow the steps to configure the system's basic network and antispam settings.

Next Steps

Deploying the FortiMail unit

Now that the FortiMail unit is up and running, you can start to deploy the unit into your network by configuring the system settings and mail settings. The *FortiMail Install Guide* will help you with this task.

Configuring the FortiMail unit

Then you can configure detailed antispam, antivirus, and logging settings to protect your mail servers and users. For details, see the FortiMail online help or the *FortiMail Administration Guide* on the documentation CD.