

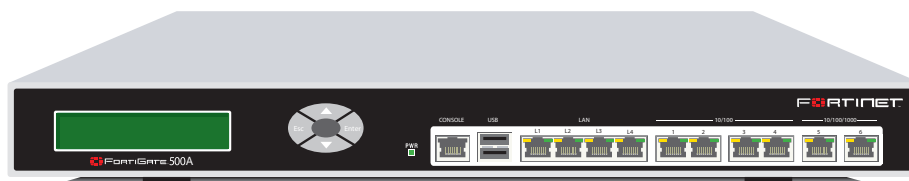
FortiGate-500A LED Indicators

LED	State	Description
Power	Green	The FortiGate unit is powered on.
	Off	The FortiGate unit is powered off.
Ports 1, 2, 3, 4, 5 and 6 LAN Ports	Amber (Left LED)	The correct cable is in use and the connected equipment has power on ports.
	Flashing Amber (Left LED)	Network activity at this interface.
	Green (Right LED)	Ports 1, 2, 3, 4 and LAN ports, the interface is connected at 100 Mbps.
	Amber (Right LED)	Ports 5 and 6, the interface is connected at 1000 Mbps.

Factory default settings

NAT/Route mode		Transparent mode	
Port 1 interface	192.168.1.99	Management IP	10.10.10.1
Port 2 interface	192.168.100.99	Administrative account settings	
Port 4 interface	10.10.10.1	User name	admin
		Password	(none)

FORTINET FortiGate-500A



QuickStart Guide

© Copyright 2005 Fortinet Incorporated. All rights reserved.

Trademarks

Products mentioned in this document are trademarks or registered trademarks of their respective holders.

Regulatory Compliance

FCC Class A Part 15 CSA/CUS

25 May 2005

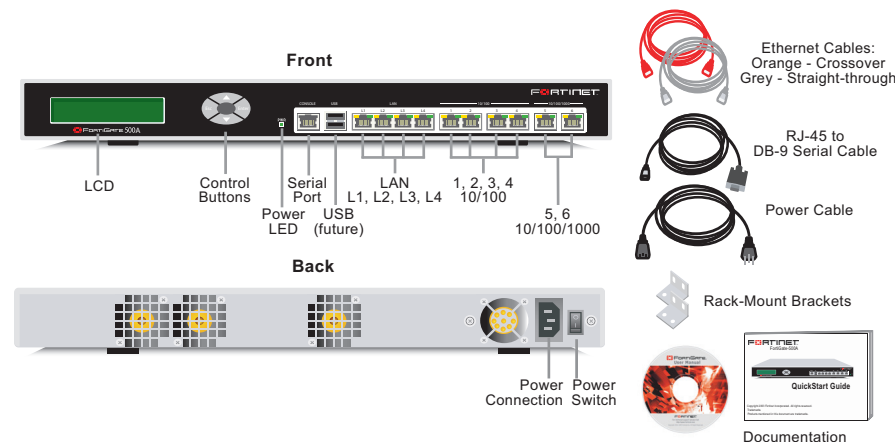
For technical support please visit <http://www.fortinet.com>.

01-28005-0103-20050525

1 Checking the package contents

Check that the package contents are complete.

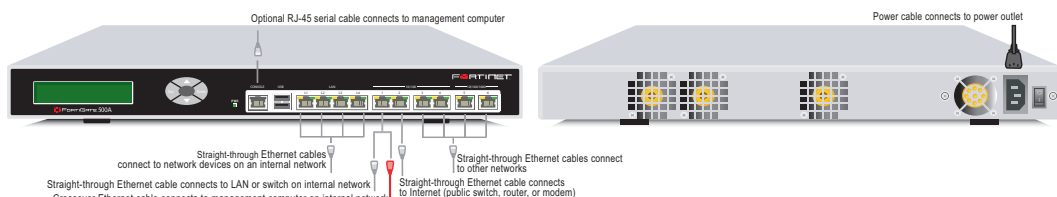
Connector	Type	Speed	Protocol	Description
LAN (L1, L2, L3, L4)	RJ-45	10/100Base_T	Ethernet	4-port switch connection to up to four network devices or an internal network.
Port 1	RJ-45	10/100Base_T	Ethernet	Default connection to the internal network.
Port 2	RJ-45	10/100Base_T	Ethernet	Default connection to the Internet.
Port 3 and 4	RJ-45	10/100Base_T	Ethernet	Optional connections to other networks, or to other FortiGate-500A units for HA. For details, see the Documentation CD-ROM.
Port 5 and 6	RJ-45	10/100/1000 Base-T	Ethernet	Optional connection to other networks.
CONSOLE	RJ-45	9600 bps	RS-232 serial	Optional connection to the management computer. Provides access to the command line interface (CLI).



2 Connecting the FortiGate-500A

Connect the FortiGate-500A unit to a power outlet and to networks.

- Place the unit on a stable surface or mount it in a 19-inch rack. It requires 1.5 inches clearance (3.75 cm) on each side to allow for cooling.
- Make sure the power switch on the back of the unit is turned off before connecting the power and network cables.



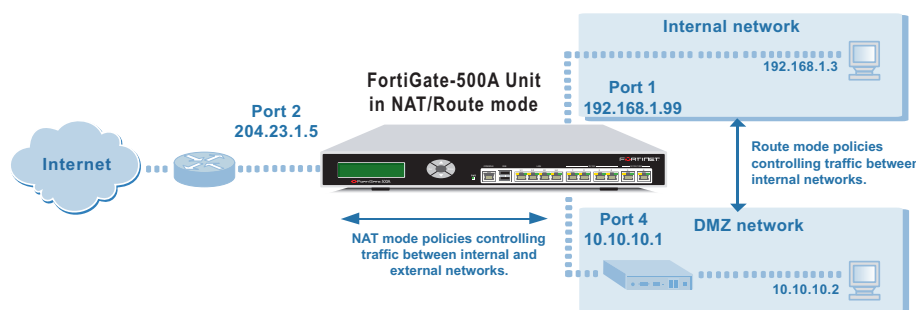
3 Planning the configuration

Before configuring the FortiGate-500A, you need to plan how to integrate the unit into your network. Your configuration plan is dependent upon the operating mode that you select: NAT/Route mode (the default) or Transparent mode.

NAT/Route mode

In NAT/Route mode, the FortiGate-500A is visible to the networks that it is connected to. All of its interfaces are on different subnets. By default you must configure the Port 1 and Port 2 interfaces with IP addresses. Optionally, you can also configure the LAN Interface and Ports 3 to 6.

You would typically use NAT/Route mode when the FortiGate-500A is deployed as a gateway between private and public networks. In its default NAT/Route mode configuration, the unit functions as a firewall. Firewall policies control communications through the FortiGate-500A unit.



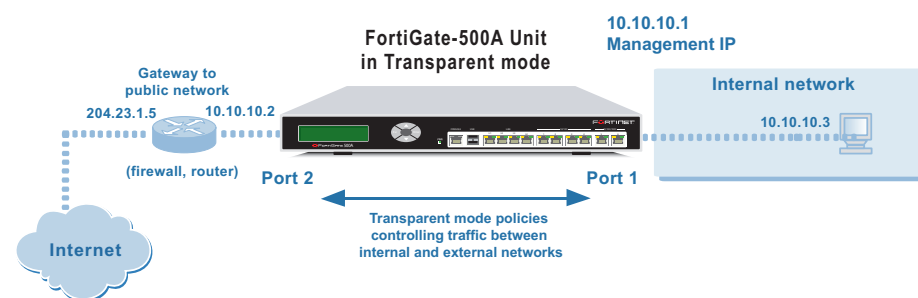
In NAT/Route mode, firewall policies can operate in NAT mode or in Route mode. In NAT mode, the FortiGate-500A performs network address translation before IP packets are sent to the destination network. In Route mode, no translation takes place. By default, the unit has a single NAT mode policy that allows users on the internal network to securely access and download content from the Internet. No other traffic is possible until you have configured more policies.

Refer to the Documentation CD-ROM for information on how to control traffic, and how to configure HA, antivirus protection, Web content filtering, Spam filtering, intrusion prevention (IPS), and virtual private networking (VPN).

Transparent mode

In Transparent mode, the FortiGate-500A is invisible to the network. All of its interfaces are on the same subnet. You only have to configure a management IP address so that you can make configuration changes.

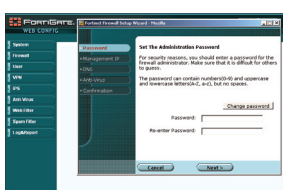
You would typically use the FortiGate-500A in Transparent mode on a private network behind an existing firewall or behind a router. In its default Transparent mode configuration, the unit functions as a firewall. By default, the unit has a single firewall policy that allows users on the internal network segment to connect to the external network segment. No other traffic is possible until you have configured more policies.



You can connect up to 5 network segments to the FortiGate-500A unit to control traffic between these network segments.

4 Choosing a configuration tool

Choose among three different tools to configure the FortiGate-500A.



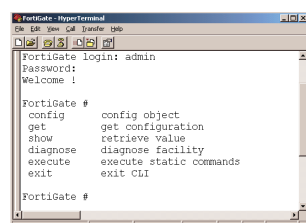
Web-based manager & Setup Wizard

The FortiGate web-based manager Setup Wizard guides you through the initial configuration steps.

Use it to configure the administrator password, the interface addresses, the default gateway address, and the DNS server addresses. Optionally, use the Setup Wizard to configure the internal server settings for NAT/Route mode.

Requirements:

- Ethernet connection between the FortiGate-500A and management computer.
- Internet Explorer version 6.0 or higher on the management computer.



Command Line Interface (CLI)

The CLI is a full-featured management tool. Use it to configure the administrator password, the interface addresses, the default gateway

address, and the DNS server addresses. To configure advanced settings, see the Documentation CD-ROM.

Requirements:

- Serial connection between the FortiGate-500A and management computer.
- A terminal emulation application (HyperTerminal for Windows) on the management computer.

IP Address
192.168.100.001

Control Buttons & LCD

The control buttons and LCD are located on the front panel of the FortiGate-500A. Use them to configure the Port 1, Port 2 and Port 5 interface addresses, and the default gateway address. To configure the other interface addresses, the DNS server addresses and other settings, use the web-based manager, or the CLI.

Requirements:

- Physical access to the FortiGate-500A.

5 Collecting information

Use these tables to record your FortiGate-500A configuration.

NAT/Route mode

Lan	IP: _____ Netmask: _____
Port 1	IP: _____ Netmask: _____
Port 2	IP: _____ Netmask: _____
Port 3	IP: _____ Netmask: _____
Port 4	IP: _____ Netmask: _____
Port 5	IP: _____ Netmask: _____
Port 6	IP: _____ Netmask: _____

The internal interface IP address and netmask must be valid for the internal network.

Transparent mode

Management IP:	IP: _____ Netmask: _____
----------------	-----------------------------

The management IP address and netmask must be valid for the network from which you will manage the FortiGate-500A.

General settings

Administrator password:	_____
Network Settings:	Default Gateway: _____
	Primary DNS Server: _____
	Secondary DNS Server: _____

A default gateway is required for the FortiGate unit to route connections to the Internet.

6 Configuring the FortiGate-500A

Web-based manager and Setup Wizard

1. Connect the FortiGate-500A Port 1 interface to a management computer Ethernet interface. Use a cross-over Ethernet cable to connect the devices directly. Use straight-through Ethernet cables to connect the devices through a hub or switch.
2. Configure the management computer to be on the same subnet as the internal interface of the FortiGate-500A. To do this, change the IP address of the management computer to 192.168.1.2 and the netmask to 255.255.255.0.
3. To access the FortiGate web-based manager, start Internet Explorer and browse to https://192.168.1.99 (remember to include the "s" in https://).
4. Type admin in the Name field and select Login.

NAT/Route mode

To configure the FortiGate-500A using the Setup Wizard, select the Easy Setup Wizard button and follow the prompts.



To change the administrator password

1. Go to **System > Admin > Administrators**.
2. Select Change Password for the admin administrator and enter a new password.

To configure interfaces

1. Go to **System > Network > Interface**.
2. Select the edit icon for each interface to configure.
3. Set the addressing mode for the interface (see the online help for information).
 - For manual addressing, enter the IP address and netmask for the interface.
 - For DHCP addressing, select DHCP and any required settings.
 - For PPPoE addressing, select PPPoE, and enter the username and password and any other required settings.

To configure the Primary and Secondary DNS server IP addresses

1. Go to **System > Network > DNS**, enter the Primary and Secondary DNS IP addresses that you recorded above and select Apply.

To configure a Default Gateway

1. Go to **Router > Static** and select Edit icon for the static route.
2. Set Gateway to the Default Gateway IP address that you recorded above and select OK.

Note: If you change the internal interface IP address (NAT/Route mode) or management IP address (Transparent mode), you must use this address to reconnect to the web-based manager and Setup Wizard. You might also have to change the IP address of the management computer to be on the same subnet as the new IP address.

Transparent mode

To switch from NAT/Route mode to Transparent mode

1. Go to **System > Status**, select Change beside Operation Mode, and select OK.
2. Change the IP address of the management computer to 10.10.10.2 and use Internet Explorer to browse to https://10.10.10.1.

To configure the FortiGate-500A using the Setup Wizard, select the Easy Setup Wizard button and follow the prompts.

To change the administrator password

1. Go to **System > Admin > Administrators**.
2. Select Change Password for the admin administrator and enter a new password.

To configure the management interface

1. Go to **System > Network > Management**.
2. Enter the Management IP address and netmask that you recorded above.
3. Select administrative access options if required and select OK.

To configure the Primary and Secondary DNS server IP addresses

1. Go to **System > Network > DNS**, enter the Primary and Secondary DNS IP addresses that you recorded above and select Apply.

To configure a Default Gateway

1. Go to **System > Network > Management**.
2. Set Default Gateway to the Default Gateway IP address that you recorded above and select OK.

Using the Command Line Interface

1. Use the serial cable to connect the FortiGate Console port to the management computer serial port.
2. Start a terminal emulation program (HyperTerminal) on the management computer. Use these settings: Baud Rate (bps) 9600, Data bits 8, Parity None, Stop bits 1, and Flow Control None.
3. At the Login: prompt, type `admin` and press Enter twice (no password required).

NAT/Route mode

1. Configure the FortiGate-500A Port 1 interface.


```
config system interface
  edit port1
    set mode static
    set ip <intf_ip> <netmask_ip>
  end
```
2. Repeat to configure each interface, for example, to configure the Port 2 interface.


```
config system interface
  edit port2
  ...
end
```
3. To configure the LAN interface:


```
config system interface
  edit lan
  ...
end
```
4. Configure the primary and secondary DNS server IP addresses.


```
config system dns
  set primary <dns-server_ip>
  set secondary <dns-server_ip>
end
```
5. Configure the default gateway.


```
config router static
  edit 1
    set gateway <gateway_ip>
  end
```

Transparent mode

1. Change from NAT/Route mode to Transparent mode.


```
config system global
  set opmode transparent
end
```
2. Wait a moment and then log in again at the prompt.
3. Configure the Management IP address.


```
config system manageip
  set ip <mng_ip> <netmask>
end
```

Configure the DNS server IP address.

```
config system dns
  set primary <dns-server_ip>
  set secondary <dns-server_ip>
end
```
4. Configure the default route.


```
config router static
  edit 1
    set gateway <gateway_ip>
  end
```

Restarting the FortiGate-500A

Should you mistakenly change a network setting and cannot connect to the unit, reboot the unit and try again or to set the unit back to factory defaults and start over again.

- To restart the unit, go to **System > Maintenance > ShutDown** and select Reboot. CLI: `execute reboot`
- To reset the unit, go to **System > Maintenance > ShutDown** and select Reset to factory default. CLI: `execute factoryreset`

7 Completing the configuration

Congratulations!
You have finished configuring the basic settings. Your network is now protected from Internet-based threats. To explore the full range of configuration options, see the online help or the Documentation CD-ROM.

Technical support

Fortinet Technical Support Web site: <http://support.fortinet.com>
Fortinet email support:

amer_support@fortinet.com	For customers in the United States, Canada, Mexico, Latin America and South America.
apac_support@fortinet.com	For customers in Japan, Korea, China, Hong Kong, Singapore, Malaysia, all other Asian countries, and Australia.
eu_support@fortinet.com	For customers in the United Kingdom, Scandinavia, Mainland Europe, Africa, and the Middle East.